

BALDOR® • RELIANCE 

Product Information Packet

SUM71006-4

10HP,RPM,0PH,HZ,210TY,TENV,V1

Part Detail							
Revision:	A	Status:	PRD/A	Change #:		Proprietary:	No
Type:	AC	Elec. Spec:	E02664C J 009	CD Diagram:	416820-001	Mfg Plant:	
Mech. Spec:		Layout:	066930-502	Poles:	06	Created Date:	04-09-2015
Base:		Eff. Date:	05-07-2015	Leads:			

Specs			
Catalog Number:	SUM71006-4	Duty Rating:	15 MIN
Enclosure:	XPNV	Heater Indicator:	No Heater
Frame:	210TY	Insulation Class:	F
Frame Material:	Iron	Inverter Code:	Inverter Ready
Output @ Frequency:	10.000 @ 60 HZ	KVA Code:	G
Voltage @ Frequency:	230 V @ 60 HZ	Lifting Lugs:	Vertical Lifting Lugs
	460 V @ 60 HZ	Motor Type:	M
XP Class and Group:	CLI GP C,D	Mounting Arrangement:	V1
XP Division:	Division I	Product Family:	Other
Agency Approvals:	CCSA US	Pulley End Bearing Type:	Ball
	CSA	Pulley Face Code:	D-Flange
	UL	Shaft Rotation:	Reversible
Base Indicator:	No Mounting	Shaft Slinger Indicator:	No Slinger
Bearing Grease Type:	Polyrex EM (-20F +300F)	Speed Code:	Single Speed
Current @ Voltage:	14.4 A @ 460 V	Motor Standards:	NEMA
	28.8 A @ 230 V	Starting Method:	Direct on line
Design Code:	B	Thermal Device - Winding:	Normally Closed Thermostat
Drip Cover:	No Drip Cover	XP Temp Code:	T3C

Nameplate 000613007AC		
CLASS I GROUP	C D X	NO. <input type="text"/>
CLASS II GROUP	X X X	
OPERATING TEMP CODE	T3C	

Nameplate 000613007MN										
CAT NO	SUM71006-4		SPEC NO.	P21G2769						
HP	10	AMPS	28.8/14.4		VOLTS	230/460		DESIGN	B	
FRAME SIZE	X210TY		RPM	1145	HZ	60	AMB	40	SF	1.15
D.E. BRG.	60BC02JPP30A		PH	3	DUTY	15MIN		INSUL	F	
O.D.E. BRG.	30BC02JPG30A		TYPE	P	ENCL	TENV		CODE	G	
			POWER FACTOR		NEMA-NOM-EFF					
			MAX CORR KVAR		GUARANTEED EFFICIENCY					
					NEMA NOM/CSA QUOTED EFF @	100% LOAD				
SER.NO.					MOTOR WEIGHT	385	LBS.			
	*15 MIN IN AIR ,SUB. IN WATER									
	ONLY; MAX DEPTH-SEE INSTR									
	MANUAL; FINAL CONN 460V;									

Nameplate 000613007MR										
CAT NO	SUM71006-4		SPEC NO.	P21G2769						
HP	10	AMPS	28.8/14.4		VOLTS	230/460		DESIGN	B	
FRAME SIZE	X210TY		RPM	1145	HZ	60	AMB	40	SF	1.15
D.E. BRG.	60BC02JPP30A		PH	3	DUTY	15MIN		INSUL	F	
O.D.E. BRG.	30BC02JPG30A		TYPE	P	ENCL	TENV		CODE	G	
			POWER FACTOR		NEMA-NOM-EFF					
			MAX CORR KVAR		GUARANTEED EFFICIENCY					
					NEMA NOM/CSA QUOTED EFF @	100% LOAD				
SER.NO.					MOTOR WEIGHT	385	LBS.			
	*15 MIN IN AIR ,SUB. IN WATER									
	ONLY; MAX DEPTH-SEE INSTR									
	MANUAL; FINAL CONN 460V;									

Parts List		
Part Number	Description	Quantity
SA297389	SA P21G2769	1.000 EA
RA284348	RA P21G2769	1.000 EA
000613007AC	UL NAMEPLATE FOR HAZARDOUS LOCATIONS	1.000 EA
000613007MN	NP,MEDIUM AC,NO CERT,STD INDUSTRIAL	1.000 EA
000613007MR	NP, MEDIUM AC, CSA, STD INDUSTRIAL	1.000 EA
000692000EJ	NAME PLATE	1.000 EA
000901001AA	LABEL WARNING	1.000 EA
034692002AE	HCSPP 1/4" 304 S.S.	1.000 EA
004824015A	GREASE POLYREX EM	0.100 LB
032018012DG	HHCS 1/2-13X1-1/2 316S.S	4.000 EA
032130010DC	HSXCS 1/2-13X1-1/4 304SS	4.000 EA
032620020JD	HSSS 10-24X5/8L 304S.S.	1.000 EA
034692003AE	PPLG 3/8" 304 S.S.	2.000 EA
047174005C	SNAP RING	1.000 EA
047174005D	SNAP RING	1.000 EA
064262012C	SEAL	1.000 EA
064262012D	SEAL	1.000 EA
032080003JB	HWHMS 10-24X3/8L PLTED	4.000 EA
032080003LB	HWHMS 1/4-20X3/8L PLTED	6.000 EA
415031017A	NUT W/WASHER 10-24 C.PLT	4.000 EA
415031017B	NUT W/WASHER1/4-20 C.P	6.000 EA
047024003B	T/LUG AMP 33218	9.000 EA
088207001AA	BRKT,DE,210SUB 88207-1WA	1.000 EA
088208001AA	MTG PLATE EX210Y SUBMERSIBLE 088208001WB	1.000 EA

Parts List (continued)		
Part Number	Description	Quantity
413412004A	SUBM MOISTURE PROBE	2.000 EA
413412005S	LEAD WIRE ASSY(BLANKET	1.000 EA
413480001R	RESISTOR ASSEMBLY-BLANKET	1.000 EA
421900144FU	ORING	1.000 EA
421900144FU	ORING	1.000 EA
004824018AF	SHELL ROTELLA OIL 10W	4.569 LB
603761001AA	LABYRINTH	1.000 EA
001575000A	WIRING DIAGRAM	1.000 EA
424476003WB	WIRING DIAGRAM MEDIUMA	1.000 EA
032018006BM	HHCS 5/16-18X3/4 PLTGRN.	1.000 EA
032018006BM	HHCS 5/16-18X3/4 PLTGRN.	1.000 EA
034036013AB	LCKW 5/16 EXT.TOOTH LCKW	1.000 EA
047024003AH	T/LUG AMP 34112	4.000 EA
609181014D	HEAT SHRINK TUBING 3/4	10.000 EA
032018010CG	HHCS 3/8-16X1-1/4L 316SS V2T23	4.000 EA
421900092FU	ORING	1.000 EA
424476003WB	WIRING DIAGRAM MEDIUMA	1.000 EA
700385014M	CCA #8 25' 210/250	1.000 EA
004824007K	SPECIAL PAINT	0.100 EA
033775004EA	DRSCR #6-1/4 304 S.S.	4.000 EA
034180009FD	KEY 3/8X3/8X1-1/8 303 SS	1.000 EA
088206001AB	BRKT,ODE,210SUB 88206-1WB	1.000 EA
421900144FU	ORING	1.000 EA
032018008BG	HHCS 5/16-18X1 BRASS-447	3.000 EA

Product Information Packet: SUM71006-4 - 10HP,RPM,0PH,HZ,210TY,TENV,V1

032018012DG	HHCS 1/2-13X1-1/2 316S.S	4.000 EA
000901001AA	LABEL WARNING	1.000 EA
B3630-9	SUBM THERMOSTAT TAG	1.000 EA
B-3664002	TAG, (NON REGREASABLE)	1.000 EA

REL. S.O.	FRAME	HP	TYPE	PHASE/HERTZ	RPM	VOLTS
	210TY	10	P	3/60	1145	230/460
AMPS	DUTY	AMB °C/ INSUL.	S.F.	NEMA DESIGN	CODE LETTER	ENCL.
28.8/14.4	*	40/F	1.15	B	G	SUB
E/S	ROTOR	TEST S.O.	TEST DATE	STATOR RES. @25 °C (BETWEEN LINES)		
537573	418425040GE	---	---	.392/1.57		

PERFORMANCE

LOAD	HP	AMPERES	RPM	INPUT KW	POWER FACTOR	% EFFICIENCY
NO LOAD	0	6.3	1200	.513	10.3	0
1/4	2.51	7.1	1187	2.43	43.1	76.9
2/4	5.00	8.9	1175	4.45	63.0	83.8
3/4	7.50	11.3	1162	6.59	73.1	84.8
4/4	10.0	14.4	1146	8.90	77.7	83.8
5/4	12.5	18.1	1125	11.5	79.5	81.4

SPEED TORQUE

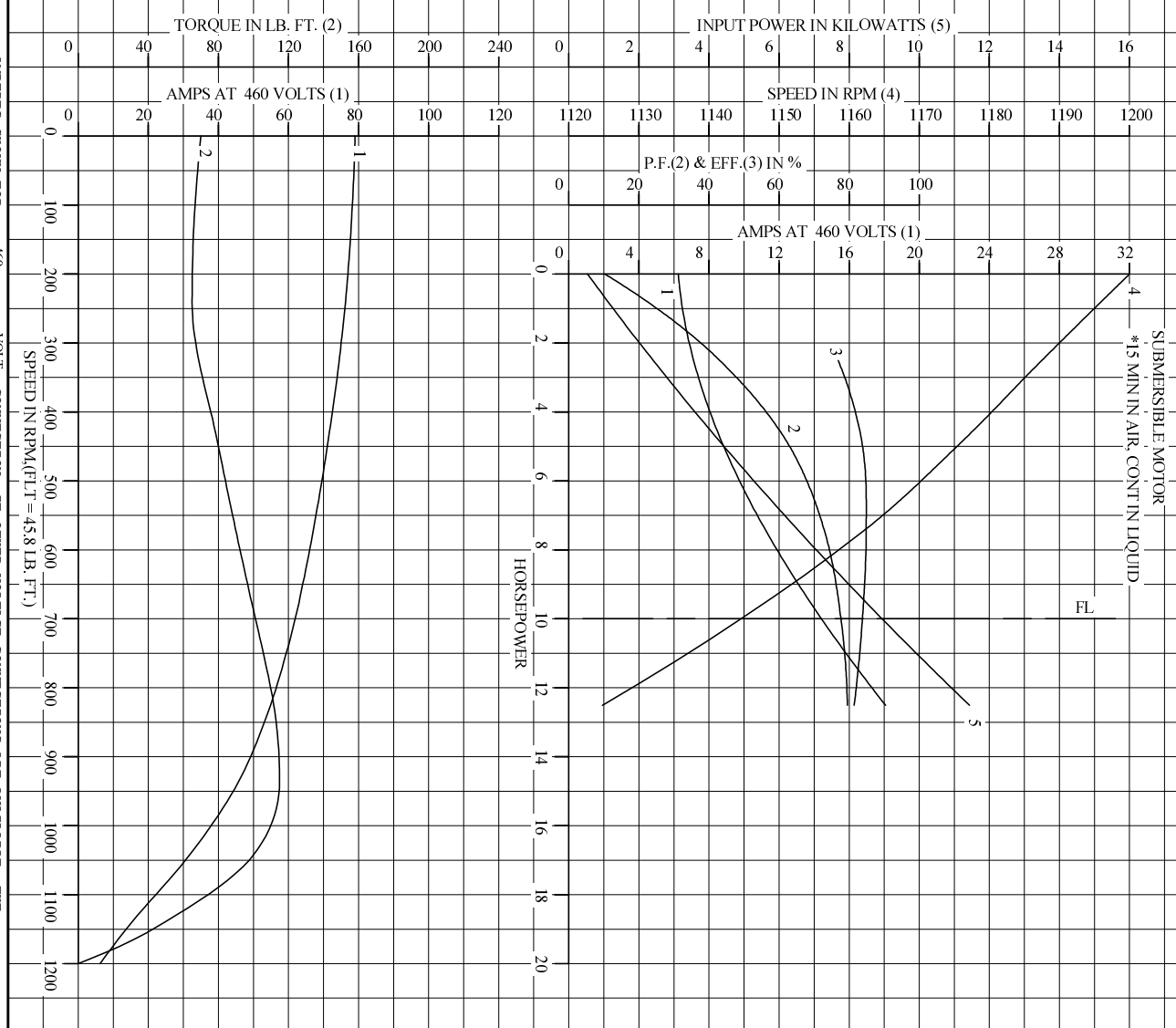
	RPM	TORQUE % FULL LOAD	TORQUE LB.-FT.	AMPERES
LOCKED ROTOR	0	153	70.0	79.0
PULL UP	240	142	65.0	76.3
BREAKDOWN	935	251	115	45.9
FULL LOAD	1146	100	45.8	14.4

AMPERES SHOWN FOR 460. VOLT CONNECTION. IF OTHER VOLTAGE CONNECTIONS ARE AVAILABLE, THE AMPERES WILL VARY INVERSELY WITH THE RATED VOLTAGE

REMARKS: CALCULATED DATA
SUBMERSIBLE MOTOR
*15 MIN IN AIR, CONT IN LIQUID

BALDOR	DR. BY	D. M. BYRD	A-C MOTOR
	CK. BY	Z. M. WOLFE	
	APP. BY	D. M. BYRD	PERFORMANCE DATA
	DATE	07/27/10	ISSUE DATE 07/27/10

REL. S.O. RPM 1145 S.F. 1.15 ROTOR 418425040GE
 FRAME 210TY VOLTS 230/460 NEMA DESIGN B TEST S.O. CALCULATED DATA
 HP 10 AMPS 28.8/14.4 CODE LETTER G TEST DATE ---
 TYPE P DUTY * ENCLOSURE SUB STATOR RES. @ 25 °C .392/1.57
 PHASE/HERTZ 3/60 AMB °C/INSUL 40/F E/S 537573 OHMS (BETWEEN LINES)



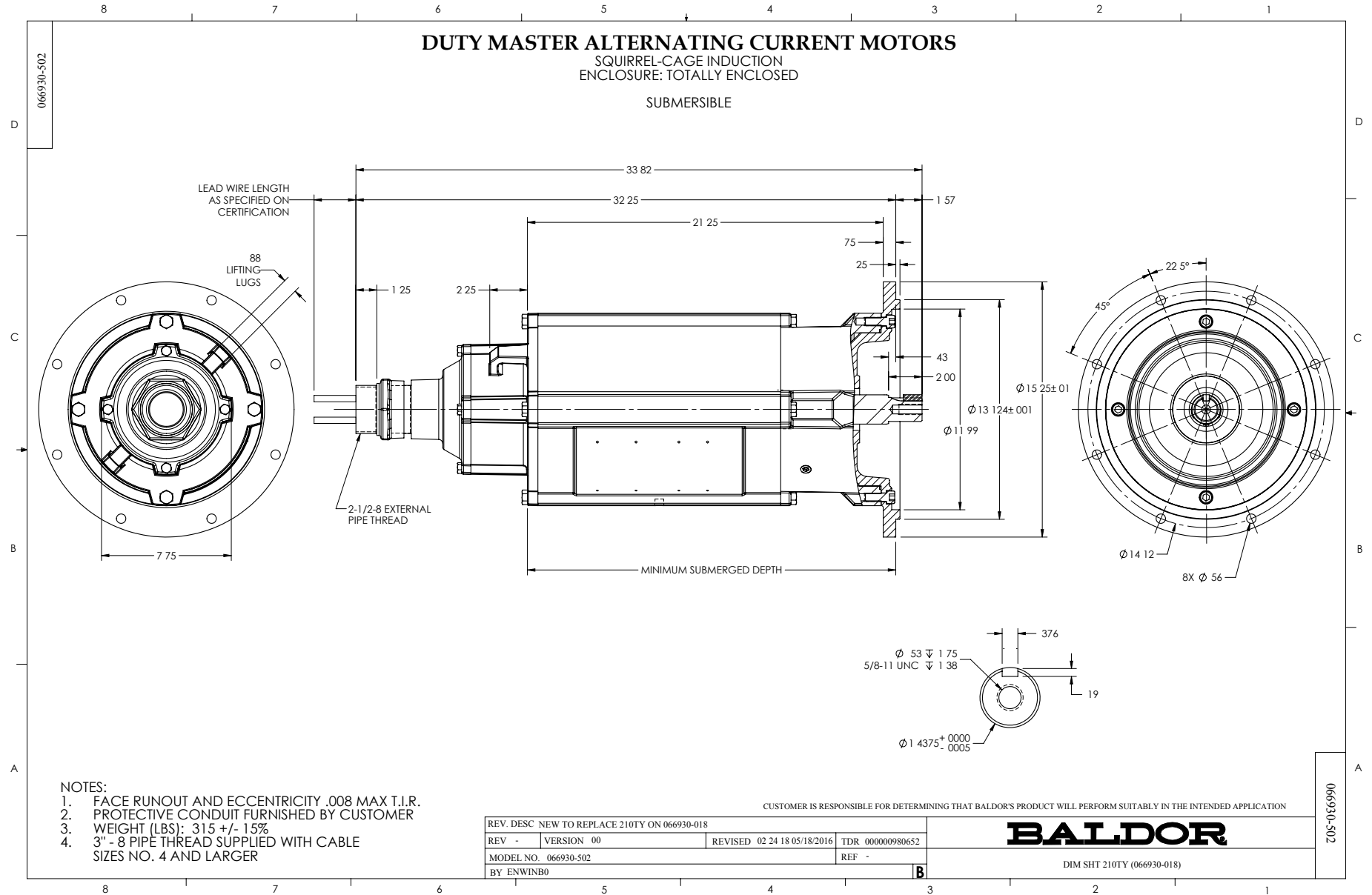
AMPERES SHOWN FOR 460 VOLT CONNECTION, IF OTHER VOLTAGE CONNECTIONS ARE AVAILABLE, THE AMPERES WILL VARY INVERSELY WITH THE RATED VOLTAGE.

BALDOR

DR. BY D.M.BYRD
 CK. BY Z.M.WOHL
 APP. BY D.M.BYRD
 DATE 07/27/10

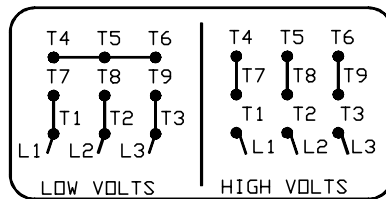
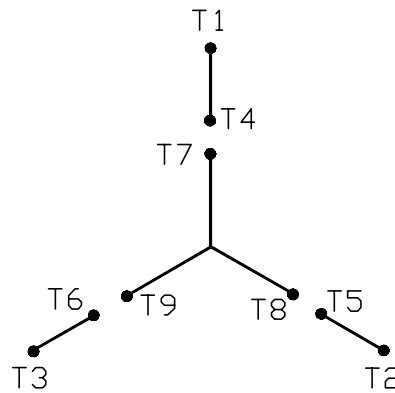
A-C MOTOR PERFORMANCE CURVES E02664-C-1009
 ISSUE DATE 07/27/10

Printed on 7/27/10 12:39 @ r99



416820-001

A-C MOTOR
 CONNECTION DIAGRAM
 STANDARD 9 LEAD Y CONNECTED



(N. P. 1575-A)

416820-001

REV. DESC: FONT CHANGE FOR PDF SEARCHABLE		
REV. LTR: A	VERSION: 01	TDR: 000001009382
FILE: \MGA\00000\659	REVISED: 10: 33: 07 12/21/2016	BY: MGHMTT
MTL: -	Ⓢ □	

BALDOR

CONN DIAG - STANDARD 9 LEAD, Y CONNECTED

SH 1 of 1

Marketing maintained PDF of MN414:

<http://www.baldor.com/support/Literature/Load.ashx/MN414?ManNumber=MN414>

